

Session Number: IT13

Title: ***“Data Center Enterprise  
Transformation 2017”***

**Mark Evanko – Principal**

**BRUNS-PAK**

**999 New Durham Road**

**Edison, NJ 08817**

**[www.bruns-pak.com](http://www.bruns-pak.com)**

**April 4, 2017 @ 1:15PM**



**Download the App  
and rate this session.**







## Data Center World – Certified Vendor Neutral

Each presenter is required to certify that their presentation will be vendor-neutral.

As an attendee you have a right to enforce this policy of having no sales pitch within a session by alerting the speaker if you feel the session is not being presented in a vendor neutral fashion. If the issue continues to be a problem, please alert Data Center World staff after the session is complete.





# ***Data Center Enterprise Transformation 2017***

Learn about the continued transformation of data center “solutions” in the year 2017 and beyond!

The presentation:

- 1) Defines the elements of the data center transformation.
- 2) Identifies the underlying factors of the cause of transformation.
- 3) Summarizes how risk and total cost of ownership impact the final decision.



# AGENDA

- I. The 2017 and Beyond Data Center Transformation*
- II. The Eighteen (18) Elements of the Comprehensive Data Center Solution*
- III. Evolving 2017 “Factors” Impacting the Data Center Transformation*
- IV. The Decision Process of Total Cost of Ownership vs. Risk (Short Term...Long Term)*
- V. Commentaries/Examples of 2016/2017*
- VI. Closing - Summary - Recap*



# *Part I*

---

## *The 2017 and Beyond Data Center Transformation*

---



# The 2017 and Beyond Data Center Transformation



- 1) Data center “business as usual” continues to transform in 2017 at an accelerated pace
- 2) Enterprise data center solutions look for the most:
  - *Flexible/expandable/scalable data center*
  - *Maximum risk aversion*
  - *Continuous compliance*
  - *Cost effectiveness*
  - *Leveraging of the technology tools available and emerging*
  - *Minimization of personnel*
  - *Being best in class in a vendor neutral delivery*
  - *Zero (goal) downtime*
  - *\*Financial/liability recovery to the enterprise*



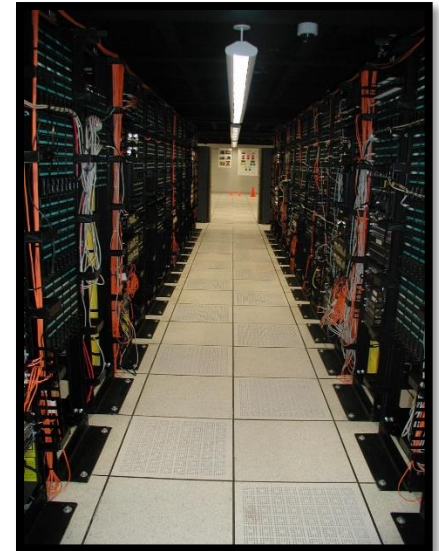
# The 2017 and Beyond Data Center Transformation

## 3) Types of data being directly categorized and mapped to compliance/security:

- *Type I, II, III, and IV*
- *Production vs. test vs. development vs. DR*

## 4) Dominating theme of 2017 and beyond:

- *Data security: Who maintains IT? Who is liable?*
- *Compliance*
- *Financial impacts*
- *Cybersecurity*

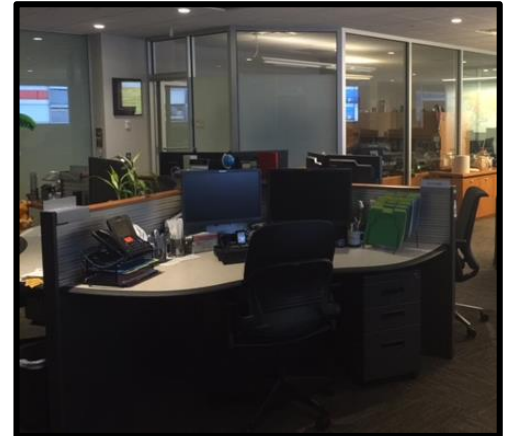




# The 2017 and Beyond Data Center Transformation

## 5) Why would board members, trustees, and/or government be concerned:

- *Gross negligence*
- *SLA's vs. recovery*
- *Brand impact*
- *Fiduciary responsibility*
- *Recent (2016/2017) class action lawsuits*



## 6) The role of 3<sup>rd</sup> party providers/partners:

- *Technical expertise/proficiency*
- *Financial stability*
- *Damages to be paid from a potential “event” – see contracts*

## 7) Data breaches dominating 2016/2017 and beyond

## 8) The total cost of ownership opex vs. capex discussion

- *Trends 2017*



# The 2017 and Beyond Data Center Transformation

## 9) Current 2016+ (Uptime Institute 2016 Survey):

- *71%: Estimated percentage of all IT assets currently sitting in enterprise data centers*
- *20%: Estimated percentage of all IT assets currently sitting in colocation data centers (and growing)*
- *9%: Estimated percentage of all IT assets currently deployed in cloud*

## 10) Transformative industries and their impacts:

- *Education remote*
- *“Driverless” vehicles*
  - a) **Personal**
  - b) **Commercial**
- *Banking*
- *Food and delivery*
- *Merchandise (brick and mortar)*
- *Video conferencing vs. travel*





## *Part II*

---

# *The Eighteen (18) Elements of the Comprehensive Data Center Solution*

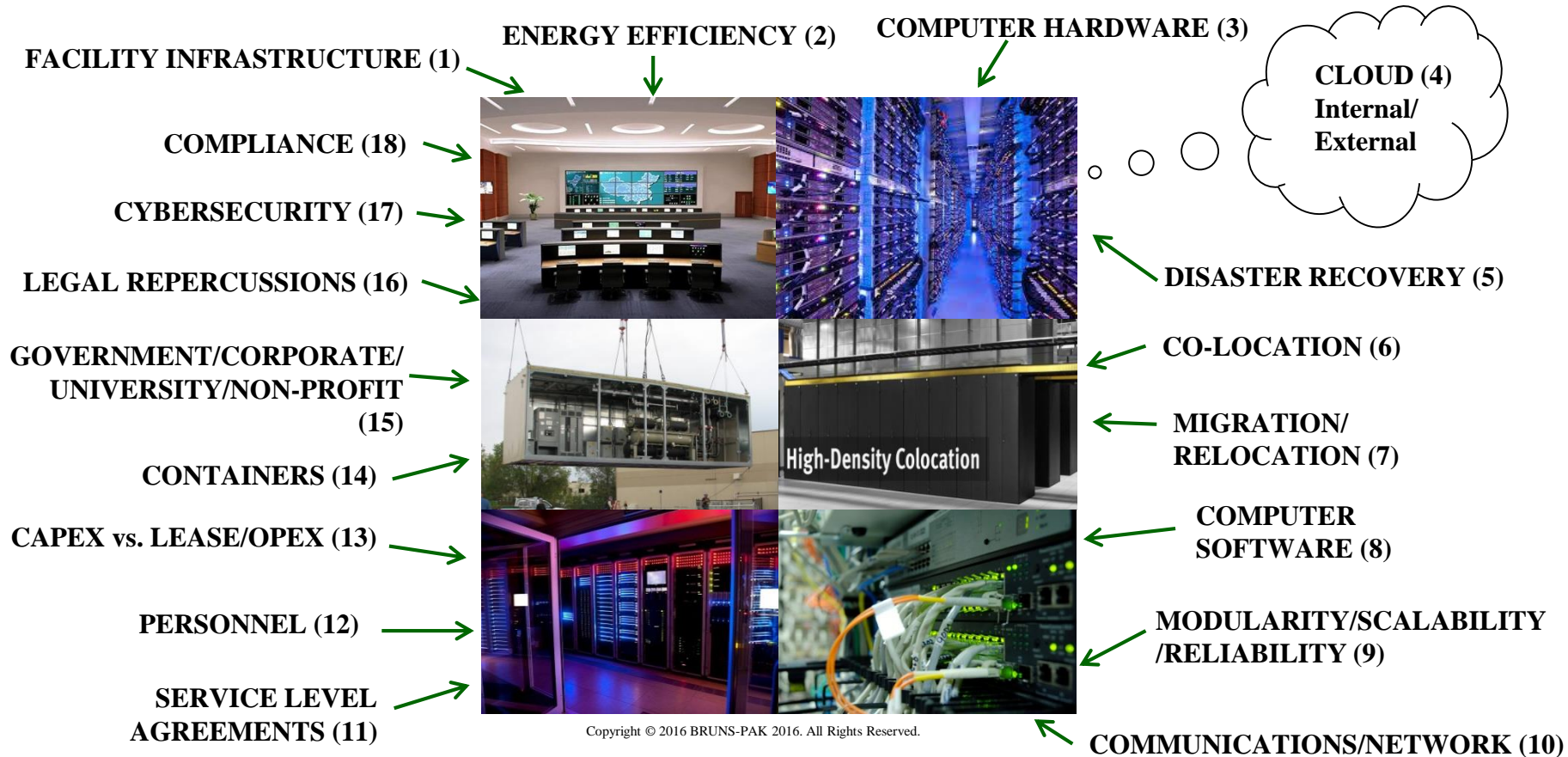
---



# The Eighteen (18) Elements of the Comprehensive Data Center Solution



## The Hybrid “2017 Transformation” Efficient Data Center Elements





# The Eighteen (18) Elements of the Comprehensive Data Center Solution

## I. How do the “eighteen elements” combine to optimize the data center enterprise solution?

- *Total cost of ownership*
- *Risk*
- *Scalability*
- *“Critical vs. non-critical” application data*
- *Best Practices*



## II. The dominating theme of #10 - Communications/Network, #11 - Server Level Agreement, #16 - Legal Repercussions, #17 - Cybersecurity, and #18 - Compliance



# The Eighteen (18) Elements of the Comprehensive Data Center Solution

## 1) Facility Infrastructure

- A. Architectural*
- B. Civil*
- C. Electrical*
- D. Fire Protection (EPO Code Change) – Update NEC/NFPA vs. Factory Mutual*
- E. Mechanical – CFD Models*
- F. Security*
- G. Site*
- H. Structural*
- I. Geographic Regional Considerations... i.e. southwest hurricanes, west earthquakes, etc.*





# The Eighteen (18) Elements of the Comprehensive Data Center Solution

## 2) Energy Efficiency

### A. ASHRAE 9.9 – Higher Inlet Temperatures

- ✓ 80° F
- ✓ 90° F
- ✓  $\Delta t$  of 20-25° F

### B. Containment

- ✓ Hot Aisle
- ✓ Cold Aisle
- ✓ Impact to people

### C. DCIM

- ✓ Gartner “Magic Quadrant”
- ✓ Per data centre (UK)
  - a. *Reduction in costs*
  - b. *Integration*
  - c. *Valuable insights*
  - d. *Increased productivity*
  - e. *Environmental benefits*





# The Eighteen (18) Elements of the Comprehensive Data Center Solution

## *D. CFD Models*

- ✓ **Why**
- ✓ **Updates**

## *E. Submerged Data Center Solutions*

- ✓ **Microsoft**

## *F. Outside Air to Cool Data Centers*

## *G. Virtualization of Servers*

## *H. LEED – New Data Center Guidelines*

- ✓ **Written to save “dollars” and be more green**
- ✓ **Office of Management and Budget to create a strategy**
- ✓ **DOE and EPA to study server and data center efficiency trends**
- ✓ **New “data center energy practitioner program”**
- ✓ **New “metrics”**
- ✓ **Data center LEED guidelines – New – LEED v4 – October 2014**  
**US Green Building Council (USGBC)**

## *I. Unity (close to) Power Factors on UPS Systems*







## LEED v4 for BD+C: Data Centers

### Project Checklist

Y ? N



Credit Integrative Process

1

0	0	0	Location and Transportation	16
			Credit LEED for Neighborhood Development Location	16
			Credit Sensitive Land Protection	1
			Credit High Priority Site	2
			Credit Surrounding Density and Diverse Uses	5
			Credit Access to Quality Transit	5
			Credit Bicycle Facilities	1
			Credit Reduced Parking Footprint	1
			Credit Green Vehicles	1

0	0	0	Sustainable Sites	10
Y			Prereq Construction Activity Pollution Prevention	Required
			Credit Site Assessment	1
			Credit Site Development - Protect or Restore Habitat	2
			Credit Open Space	1
			Credit Rainwater Management	3
			Credit Heat Island Reduction	2
			Credit Light Pollution Reduction	1

0	0	0	Water Efficiency	11
Y			Prereq Outdoor Water Use Reduction	Required
Y			Prereq Indoor Water Use Reduction	Required
Y			Prereq Building-Level Water Metering	Required
			Credit Outdoor Water Use Reduction	2
			Credit Indoor Water Use Reduction	6
			Credit Cooling Tower Water Use	2
			Credit Water Metering	1

0	0	0	Energy and Atmosphere	33
Y			Prereq Fundamental Commissioning and Verification	Required
Y			Prereq Minimum Energy Performance	Required
Y			Prereq Building-Level Energy Metering	Required
Y			Prereq Fundamental Refrigerant Management	Required
			Credit Enhanced Commissioning	6
			Credit Optimize Energy Performance	18
			Credit Advanced Energy Metering	1
			Credit Demand Response	2
			Credit Renewable Energy Production	3
			Credit Enhanced Refrigerant Management	1
			Credit Green Power and Carbon Offsets	2

Project Name:  
Date:

0	0	0	Materials and Resources	13
Y			Prereq Storage and Collection of Recyclables	Required
Y			Prereq Construction and Demolition Waste Management Planning	Required
			Credit Building Life-Cycle Impact Reduction	5
			Credit Building Product Disclosure and Optimization - Environmental Product Decla	2
			Credit Building Product Disclosure and Optimization - Sourcing of Raw Materials	2
			Credit Building Product Disclosure and Optimization - Material Ingredients	2
			Credit Construction and Demolition Waste Management	2

0	0	0	Indoor Environmental Quality	16
Y			Prereq Minimum Indoor Air Quality Performance	Required
Y			Prereq Environmental Tobacco Smoke Control	Required
			Credit Enhanced Indoor Air Quality Strategies	2
			Credit Low-Emitting Materials	3
			Credit Construction Indoor Air Quality Management Plan	1
			Credit Indoor Air Quality Assessment	2
			Credit Thermal Comfort	1
			Credit Interior Lighting	2
			Credit Daylight	3
			Credit Quality Views	1
			Credit Acoustic Performance	1

0	0	0	Innovation	6
			Credit Innovation	5
			Credit LEED Accredited Professional	1

0	0	0	Regional Priority	4
			Credit Regional Priority: Specific Credit	1
			Credit Regional Priority: Specific Credit	1
			Credit Regional Priority: Specific Credit	1
			Credit Regional Priority: Specific Credit	1

0	0	0	TOTALS	Possible Points: 110
Certified: 40 to 49 points, Silver: 50 to 59 points, Gold: 60 to 79 points, Platinum: 80 to 110				



# The Eighteen (18) Elements of the Comprehensive Data Center Solution

## 3) Computer Hardware

- A. Higher Efficiency*
- B. High Performance Computing (HPC) Continues to Dominate*
- C. New Flash Storage*
- D. Water Cooled to the Chip in 2016 and Beyond*
- E. 52" Deep by 30" Rack!!!*
- F. Non-Uniform Cabinet Distribution*
- G. "Submerged" systems in cooling*





# The Eighteen (18) Elements of the Comprehensive Data Center Solution

## 4) Cloud

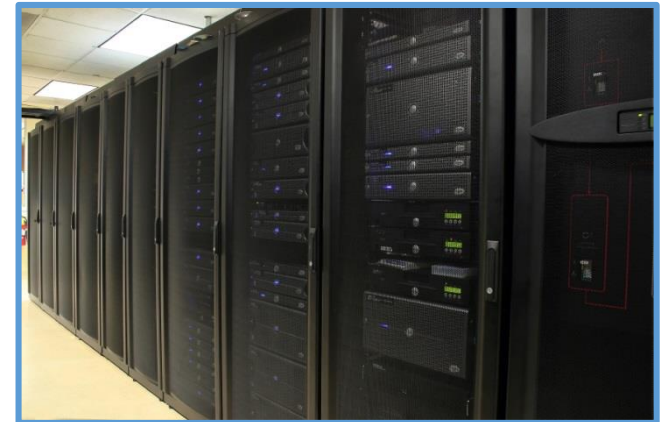
- A.** *Managed services*
- B.** *Internal vs. external*
- C.** *Migration to the cloud*
- D.** *Migration Back?*
- E.** *Moves/adds/changes*
- F.** *Trouble shooting*
- G.** *True “partner” of equal financial stability*
- H.** *Downtime: Who Pays?*
- I.** *Security Breach: Who Pays?*
- J.** *Terms and conditions (Legal Beagles!!!) 2016+ in motion*
- K.** *Production vs. Test/Development*





# The Eighteen (18) Elements of the Comprehensive Data Center Solution

- L. Applications Conducive to Cloud – General Common Platform – Candidacy*
- M. Where is My Data? Who Manages? Do You Care?*
- N. “New” 2016/2017 United States Legislation – “Company” Liability for Data*
- O. Speed to delivery of applications*
- P. The 2016 / 2017 contract language for cloud contracts*
- Q. Critical vs. non-critical data*
- R. Moves/adds/changes*
- S. Amazon, Microsoft, Google, etc.  
If Interruption – What is Impact?*





# The Eighteen (18) Elements of the Comprehensive Data Center Solution

## 5) Disaster Recovery

**A.** *Downtime Tolerance - critical*

✓ **None to 2 days**

**B.** *Synchronous Data Replication*

✓ **Impact to Data Center Facility Infrastructures**

✓ **Hardware, Software, Network, and Personnel Consideration**

**C.** *“100 Mile” Disaster Recovery vs. Multiple “Regional” Recovery Centers*

**D.** *Testing*

**E.** *Testing of Disaster Recovery Plan*

**F.** *Government Regulations for Uptime*





# The Eighteen (18) Elements of the Comprehensive Data Center Solution

## 6) Co-Location

- A. Leased data center constructed space*
- B. Capex schedule of delivery minimized*
- C. ROI – see total cost of ownership – 4+?*
- D. Other tenants? – Impact of security - Dominating 2016/2017*
- E. Downtime: Who pays? - Dominating 2016/2017*
- F. Security Breach: Who pays? - Dominating 2016/2017*
- G. Terms and conditions (Legal Beagles 2016/2017!!!)*
- H. “New” 2015 United States Legislation – Progressing – Class Action Lawsuits*
- I. Financial strength of service providers – see Cushman Wakefield survey of “economics” 2016 report – **DANGER!***
- J. Moves/add/changes*
- K. New 2015/2016/2017 “Internal” Self Funded Co-location “Lease” Data Center Solutions*





# The Eighteen (18) Elements of the Comprehensive Data Center Solution

## 7) Migration / Relocation

- A. Move existing or buy/lease new?*
- B. Asset swap outs – seed equipment*
- C. General hardware life cycle  $\pm$  3-4 years?*
- D. Maximize uptime*
- E. Multiple phases*
- F. Consolidation strategies*
- G. Physical cost vs. planning costs (Larger)*
- H. Impacts of the network*
- I. Move it? – Plan to migrate back? – Resume update!!*  
***DANGER!!**–Bowling tournaments-Fly Fishing-General Retirement?*
- J. Risk of Move*
  - ✓ **Existing**
  - ✓ **Co-location**
  - ✓ **Cloud**





# The Eighteen (18) Elements of the Comprehensive Data Center Solution

## 8) Computer Software

- A. Continues emphases on large scale corporate “procurement” effort to leverage one (1) license where possible*
- B. Production (Critical) vs. Non-Production Software*
- C. SPOF Consideration*
- D. Examples:*
  - ✓ **Patient Care**
  - ✓ **Pharmacy**
  - ✓ **Surgical**
  - ✓ **Banking**
  - ✓ **Stock Trading**
  - ✓ **Grading**
  - ✓ **Diagnostics**
- E. Data Analytics – **TREMENDOUS!** 2017 and Beyond*
- F. Tier I-IV Applications - Candidacy*





# The Eighteen (18) Elements of the Comprehensive Data Center Solution

## 9) Modularity / Scalability / Reliability

### A. Optimize

- ✓ Computer hardware
- ✓ Computer software
- ✓ Telecommunication (network)
- ✓ Facilities
- ✓ Service level agreements
- ✓ Disaster Recovery
- ✓ Cloud/Co-location/Container



*Scale with growth!*

- B. Defray CAPEX/OPEX dollars until needed across the board*
- C. Scale without interruption*
- D. Reliability past/present/future*
- E. In house vs. outsource*



# The Eighteen (18) Elements of the Comprehensive Data Center Solution

## 10) Communications / Network – Dominating 2017 and Beyond - #1 Factor Dominating

- A. Redundant / isolated paths?*
- B. Multiple carriers*
- C. Data breach? Who pays? Significant dominant focus 2016 / 2017*
- D. Data security? Who is responsible?*
- E. - Hillary Clinton Server – “Chinese and Russians have everything anyhow” – **WOW!** – Classified Top Secret Emails?  
- “Pokémon”*
- F. The power of the cloud – iPhone®*
- G. Impact of network loss*
- H. Who manages the network?*
- I. Dominating the news media 2016/2017*





# The Eighteen (18) Elements of the Comprehensive Data Center Solution

## 11) Service Level Agreements

- A.** *Internal vs. external (client) based*
- B.** *Government imposed guidelines/performance (i.e. HIPPA, etc.)*
- C.** *Co-Location / Cloud – 2016/2017 transformation – fine print – who pays? – how much? – damages (Legal Beagles 2016/2017!!)*
- D.** *What does 99.999 availability mean to me when “I go down?”*
- E.** *Example – 3<sup>rd</sup> Party Provider – Contract 99.999 (32 seconds?) – What if I go down – Your Risk!!!*
- F.** *See Part III*

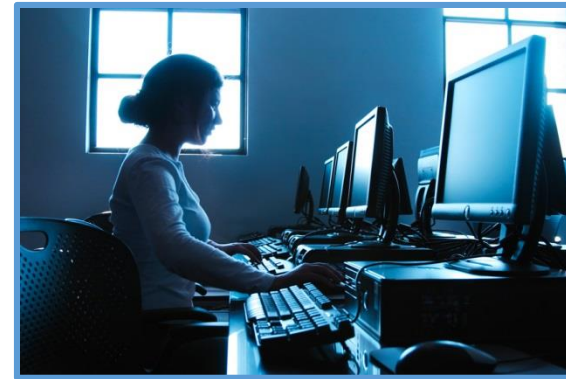




# The Eighteen (18) Elements of the Comprehensive Data Center Solution

## 12) Personnel

- A. Employee vs. contract personnel*
- B. Data Breaches*
- C. The Staffing Costs*
- D. Why Not Outsource?*
  - ✓ **Share Personnel Costs with Others**
  - ✓ **Share Benefits**
- E. Wiki Leaks*





# The Eighteen (18) Elements of the Comprehensive Data Center Solution

## 13) CAPEX vs. OPEX

- A.** *CAPEX – Capital dollars spent to build/deploy data center across (18) elements*
- B.** *OPEX – Operating dollar “expense” to financial statements – very attractive*
- C.** *New trend of internal “OPEX” data center solution 2016 / 2017 / 2018*
- D.** *Cloud/Co-location OPEX?*
- E.** *Migration Cost – OPEX*
- F.** *Relocation Cost – OPEX*
- G.** *Network (Recurring) Cost – OPEX*
- H.** *Seed Equipment – CAPEX or OPEX*





# The Eighteen (18) Elements of the Comprehensive Data Center Solution

## 14) Containers

- A. Speed to Market?*
- B. Regulatory Agency Review – AHJ*
  - Temporary**
  - vs.**
  - Permanent**
- C. Cost of Pre-Fabricated vs. “Stick Build”*
- D. ADA Compliance*
- E. Remove World Quality Control Issues*
- F. High Performance Compute vs. Work Flow*





# The Eighteen (18) Elements of the Comprehensive Data Center Solution

## 15) Government/Corporate/University/Non-Profit

*A. Data Center Global Initiatives*

*B. The Impact/Goal of Being “Green”*

*C. Government Regulations to Continue to Roll-Out Regarding “Data”*

- ✓ **Safety**
- ✓ **Security**
- ✓ **Liability**
- ✓ **Storage**

*D. The Role of Downtime*

*E. Parallel – The “Drone” Legislation*

*F. “In the News”*

- ✓ **Highlights each evening**





# The Eighteen (18) Elements of the Comprehensive Data Center Solution

## 16) Legal Repercussions

- A.** *The most dominant theme of 2016 / 2017 data center optimization impacting in house vs. outsource*
- B.** *The 2016 “Reaction” of 3<sup>rd</sup> Party Provider “Contracts” (i.e. Cloud/Co-location Companies) to the Liability Issue – Example: \$35 per sq. ft. per month to \$350 per sq. ft. per month - Trend*
- C.** *Government fines – No More “Life Lock” – Good Luck!*
- D.** *Stockholder lawsuits*
- E.** *Individual lawsuits*
- F.** *Fiduciary responsibility*
- G.** *“Non-disclosed” trends*
- H.** *Mark Evanko – Data “permanently borrowed – see limited law school” – disqualified mortgage?*





# The Eighteen (18) Elements of the Comprehensive Data Center Solution

## 17) Cybersecurity

### - *5 Types of attacks evolving*

- A. Malicious messages that really look like the real thing.*
- B. Ransomware moves into the cloud and onto your phone*
- C. Point of sale attacks*
- D. Targeting the “1%” individuals – wealth – **DANGER!**  
Tommy Lawrence, Robert Sharp, Paul Brandenburg!*
- E. Espionage and cyberwar*

✓ ***CNA HARDY***





## 18) Compliance

-



# *Part III*

---

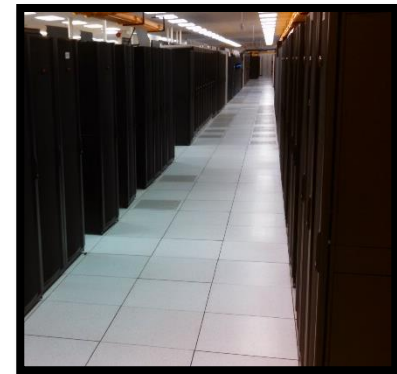
## *Evolving 2017 “Factors” Impacting the Data Center Transformation*

---



# Evolving 2017 “Factors” Impacting the Data Center Transformation

- 1) The focus of a preference for a data center opex vs. capex cost
- 2) Data center outsource model – reduce employee/perceived cost/allow one (1) group to manage/maintain
- 3) Cloud and co-location models
- 4) Short term vs. long term financial planning
- 5) Evolving – legal liability and responsibility/accountability
- 6) Cybersecurity impacts – Who is liable?





# Evolving 2017 “Factors” Impacting the Data Center Transformation

- 7) **Compliance impacts – Who is liable?**
- 8) **Tier I vs. Tier IV data**
- 9) **Board members/trustees – gross negligence and fiduciary responsibility**
- 10) **Contact language of 3rd party providers being reviewed in detail**
- 11) **Class action lawsuits – Target, Home Depot, etc.**
- 12) **Hybrid enterprise data center solutions – more complex**
- 13) **Impacts of buy/sell/out of business – 3rd party providers?**





# *Part IV*

---

## *The Decision Process of Total Cost of Ownership vs. Risk...(Short Term/Long Term)*

---



# The Decision Process of Total Cost of Ownership vs. Risk (Short Term...Long Term)

## 1) More enterprise awareness of total cost of ownership

- A. *Opex lease*
- B. *Opex network*
- C. *Move/migration*
- D. *Changes?/reserve cost*
- E. *Seed equipment*

### And Risk

- A. *Network*
- B. *Downtime*
- C. *Penalty*
- D. *Cybersecurity*
- E. *Compliance*
- F. *Brand*





# The Decision Process of Total Cost of Ownership vs. Risk (Short Term...Long Term)

## 2) Short term planning

A. Move in **vs.** long term planning

B. 3 yr./5 yr./10 yr.?

- **Out of Dodge???**



3) 2008 vintage – Opex available only 3rd party  
2017 – Opex available internal

4) How many data center enterprises do a comprehensive total cost of ownership vs. risk analysis on a vendor neutral basis???

- **Trends – Board's Demand**

5) True cost analysis - Tier I – IV applications vs. test vs. development



# *Part V*

---

## *Commentaries/Examples of 2016/2017*

---



# Commentaries / Examples of 2016/2017

- 1) **Data security pending 2017 – Verizon enters purchase agreement with Yahoo for \$4.8 billion. Then (apparently after?) finds ±500 million Yahoo accounts hacked? Deal impact – pending – NY Times 9/23/16**
- 2) **New York State Attorney General “says that number of breach notifications companies send to New York residents when personal information exposed is up 40% this year compared to last.” \*Wall Street Journal 5/6/16**





# Commentaries / Examples of 2016/2017

## 3) Digital transformation – Security

**Security:** Many IoT security threats have already been publicly demonstrated or exposed. It is clear that security needs to be included throughout the whole product life cycle – from design and development through to production - and not just added on as an afterthought. Attention also needs to be paid to developing processes and mechanisms for updating, patching, and scanning components and systems that are no longer in the producer's domain but are already in use by the customer.

\*IDC – White papers April 2016





# Commentaries / Examples of 2016/2017

## 4) Gartner analyst - Mr. Dave Cappuccio – VP summarized by Data Center Knowledge

*That new role has less to do with managing disparate bits of infrastructure and more to do with selecting the best infrastructure strategy to provide a specific service. The toolbox they can select from includes on-premise or colocation data centers and cloud - private, public, or hybrid, on-prem or outsourced.*

*In addition to the primary data center, that environment is likely to include a secondary data center, some colocation space, a disaster recovery site, DR-as-a-Service, branch-office IT, Software-as-a-Service applications, micro data centers in branch offices, social-networking platforms used by staff, and so on.*

- **Latency**
- **Reputation**
- **Service continuity**
- **Performance**
- **Security**
- **Data Protection**
- **Compliance**
- **RTO and DR** \* 1/4/17 by Yevgeniy Sverdlik



# Commentaries / Examples of 2016/2017

- 5) It takes 33 hours to recover from a ransomware attack – 48% said their organizations have been hit by at least one ransomware attack in the last 12 months – Cyberheist News, November 21, 2016
- 6) Stringent compliance and eDiscovery requirements, which means organizations must store and manage more data over longer periods of time. Demand for high availability and zero downtime, even in the event of natural disasters or others unexpected events. \* Iron Mountain Build vs. Buy 2016 – See Compliance and Security





# Commentaries / Examples of 2016/2017

## 7) The top 10 IT issues for 2017, reiterated in today's report:

1. *Information security;*
2. *Student success and completion;*
3. *Data-informed decision-making;*
4. *Strategic leadership;*
5. *Sustainable funding;*
6. *Data management and governance;*
7. *Higher education affordability;*
8. *Sustainable staffing;*
9. *Next-generation enterprise IT; and*
10. *Digital transformation of learning.*

\* *EDUCAUSE 1/18/17*





# Commentaries / Examples of 2016/2017

- 8) \* Equinix ends Brazil's 24 days digital blackout effecting 16,000 organizations  
\* IBM January 3 Sao Paulo data center outage Sao Paulo, 8 hours \* FIF London, January 27, 2017

## 9) Example confidential

- A. *4<sup>th</sup> quarter 2016 – colo provider – accepts “unlimited liability” – conversation*
- B. *Analysis January 2017*
- **4 data centers**
  - **Centralize in region**
  - **Facilities initially**
  - **Board of Directors – add hardware, software, network (cybersecurity), migration/relocation**



## 10) Delta impact 2016



# *Part VI*

---

## *Closing - Summary - Recap*

---





### 3 Key Things You Have Learned During this Session

1. What is the definition of data center transformation 2017?
2. What are the underlying factors causing the data center transformation of 2017 and beyond?
3. How does risk and total cost of ownership relate to data center transformation?





---

# *Thank You!*

*Mark Evanko – Principal*

*BRUNS-PAK*

*999 New Durham Road*

*Edison, NJ 08817*

[www.bruns-pak.com](http://www.bruns-pak.com)

